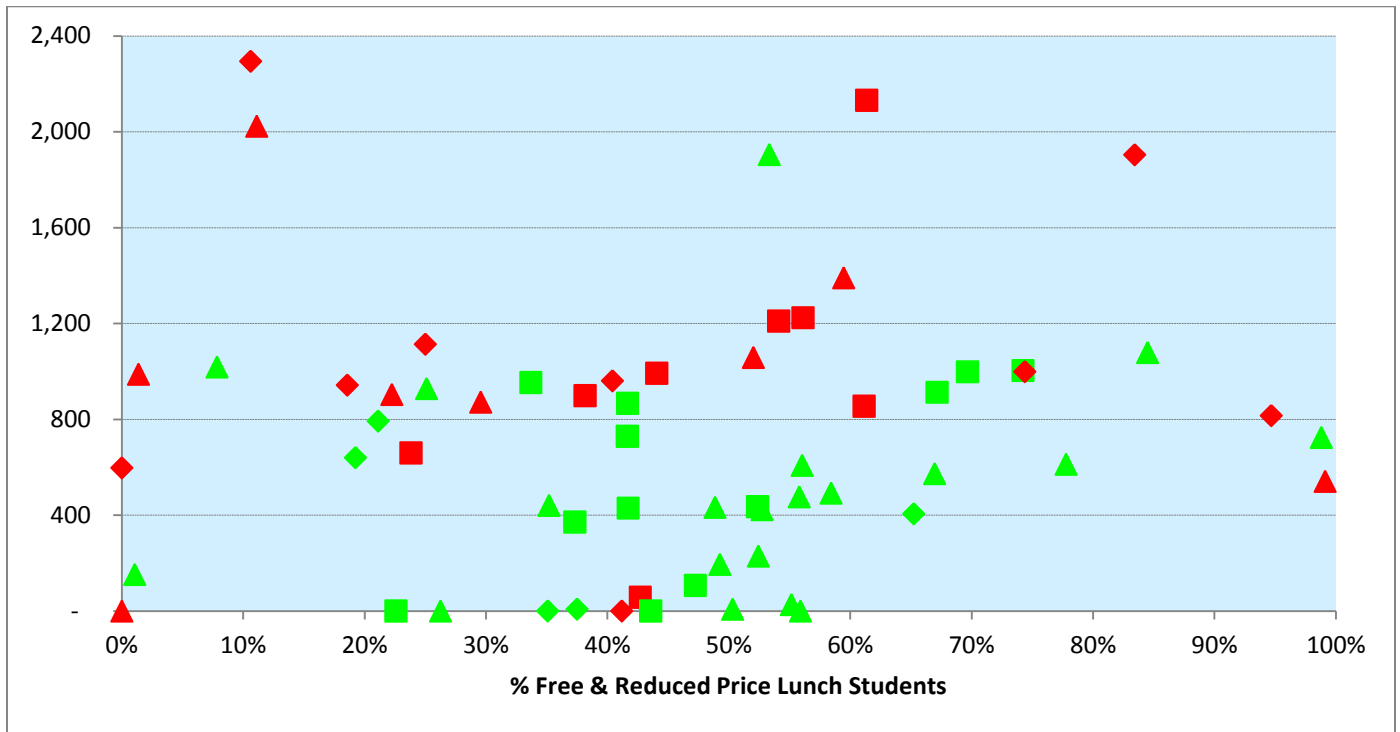
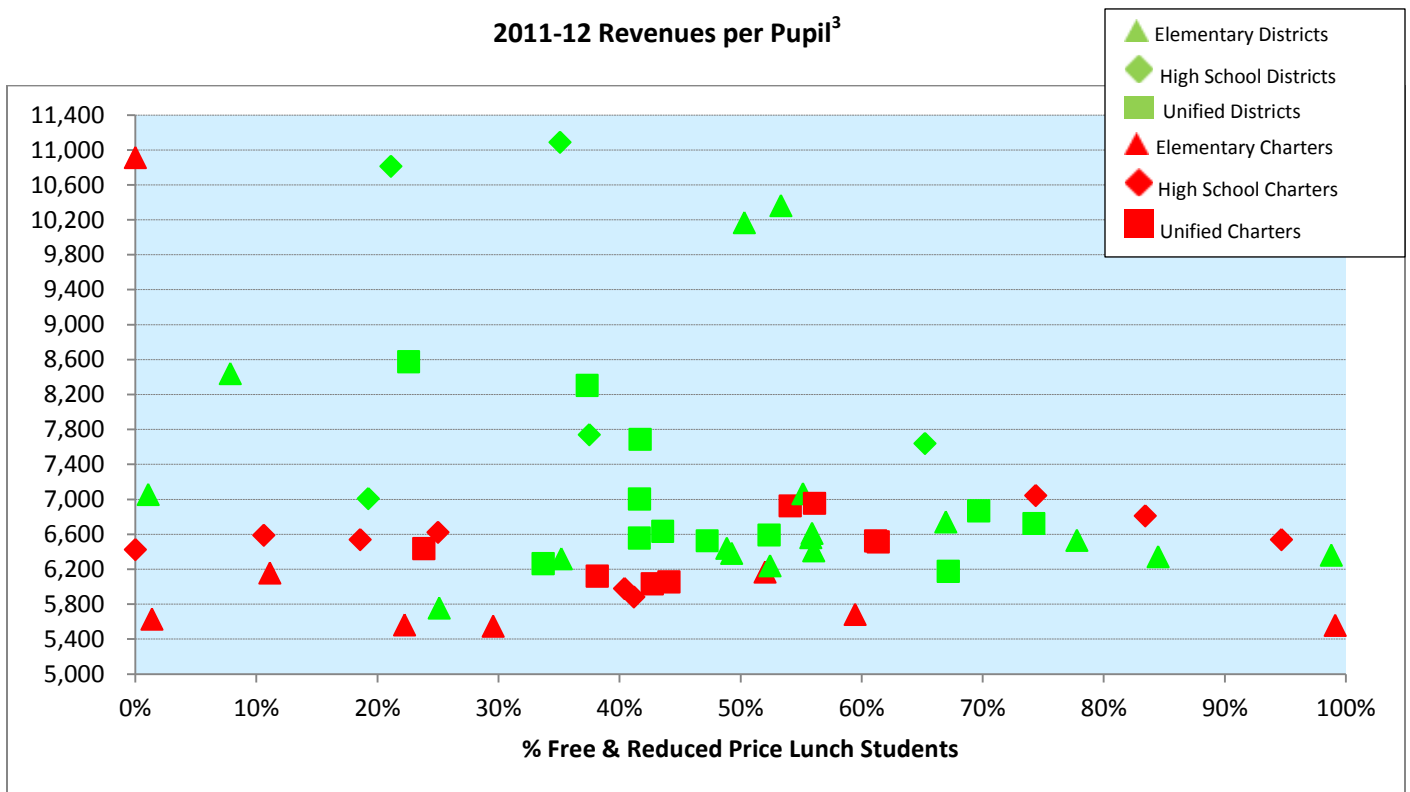




2012-13 Cross-Year Deferrals per Pupil<sup>1,2</sup>



2011-12 Revenues per Pupil<sup>3</sup>



<sup>1</sup> Source – California Department of Finance, California Department of Education

<sup>2</sup> The Revenue chart does not include one outlier that exceeds the maximum revenue amount.

<sup>3</sup> Source - California Department of Finance



**SENATE DISTRICT 14 – SEN. TOM BERRYHILL (MODESTO)**  
**Distribution of Cross-Year Deferrals and Revenues**

| LEA  | % FRPL | Cross-Year Deferrals | 2011-12 Revenues | ADA    | LEA Level   | LEA Type |
|--|--------|----------------------|------------------|--------|-------------|----------|
| Alview-Dairyland Union Elementary              | 67%    | 574                  | 6,742            | 340    | Elementary  | DISTRICT |
| Alvina Elementary                              | 58%    | 492                  | 3,331            | 399    | Elementary  | DISTRICT |
| Amador County Unified                          | 44%    | -                    | 6,633            | 3,805  | Unified     | DISTRICT |
| Ambassador Phillip V. Sanchez Public Charter   | 83%    | 1,904                | 6,811            | 204    | High School | CHARTER  |
| Arcohe Union Elementary                        | 56%    | 608                  | 6,411            | 394    | Elementary  | DISTRICT |
| Bass Lake Joint Union Elementary               | 56%    | -                    | 6,611            | 808    | Elementary  | DISTRICT |
| Bret Harte Union High                          | 35%    | -                    | 11,088           | 767    | High School | DISTRICT |
| Calaveras Unified                              | 47%    | 107                  | 6,526            | 3,182  | Unified     | DISTRICT |
| Carter G. Woodson Public Charter               | 74%    | 999                  | 7,044            | 328    | High School | CHARTER  |
| Central Unified                                | 67%    | 913                  | 6,177            | 14,040 | Unified     | DISTRICT |
| Chawanakee Unified                             | 37%    | 371                  | 8,304            | 873    | Unified     | DISTRICT |
| Chowchilla Elementary                          | 78%    | 613                  | 6,531            | 1,957  | Elementary  | DISTRICT |
| Chowchilla Union High                          | 65%    | 406                  | 7,640            | 945    | High School | DISTRICT |
| Clay Joint Elementary                          | 25%    | 929                  | 5,756            | 243    | Elementary  | DISTRICT |
| Clovis Online Charter                          | 11%    | 2,294                | 6,589            | 195    | High School | CHARTER  |
| Clovis Unified                                 | 34%    | 954                  | 6,263            | 36,708 | Unified     | DISTRICT |
| Columbia Union                                 | 56%    | 477                  | 6,562            | 573    | Elementary  | DISTRICT |
| Connecting Waters Charter                      | 44%    | 992                  | 6,054            | 2,089  | Unified     | CHARTER  |
| Connections Visual and Performing Arts Academy | 0%     | 597                  | 6,425            | 220    | High School | CHARTER  |
| Crescent View South Charter                    | 56%    | 1,224                | 6,954            | 440    | Unified     | CHARTER  |
| Crescent View West Charter                     | 54%    | 1,210                | 6,925            | 313    | Unified     | CHARTER  |
| Curtis Creek Elementary                        | 55%    | 27                   | 7,065            | 485    | Elementary  | DISTRICT |
| Denair Academic Avenues                        | 30%    | 872                  | 5,548            | 156    | Elementary  | CHARTER  |
| Denair Charter Academy                         | 24%    | 660                  | 6,435            | 341    | Unified     | CHARTER  |
| Denair Unified                                 | 52%    | 435                  | 6,592            | 1,086  | Unified     | DISTRICT |
| Glacier High School Charter                    | 95%    | 816                  | 6,539            | 94     | High School | CHARTER  |
| Gold Rush Charter                              | 38%    | 899                  | 6,122            | 308    | Unified     | CHARTER  |
| Golden Lakes Charter                           | 43%    | 58                   | 6,034            | 80     | Unified     | CHARTER  |
| Golden Valley Unified School District          | 42%    | 867                  | 7,005            | 1,854  | Unified     | DISTRICT |
| Gratton Charter                                | 1%     | 988                  | 5,629            | 73     | Elementary  | CHARTER  |
| Gratton Elementary                             | 8%     | 1,019                | 8,440            | 53     | Elementary  | DISTRICT |
| Hickman Middle                                 | 40%    | 961                  | 5,979            | 191    | Middle      | CHARTER  |
| Hume Lake Charter                              | 61%    | 2,131                | 6,513            | 43     | Unified     | CHARTER  |
| Jamestown Elementary                           | 1%     | 153                  | 7,056            | 375    | Elementary  | DISTRICT |
| Kings Canyon Joint Unified                     | 74%    | 1,004                | 6,724            | 9,184  | Unified     | DISTRICT |
| Kingsburg Elementary Charter                   | 53%    | 423                  | 2,934            | 4,669  | Elementary  | DISTRICT |

Take action at <http://www.edvoice.org/fairfunding> or for more information, contact [Sarah Lillis](#), EdVoice Institute Director.



**SENATE DISTRICT 14 – SEN. TOM BERRYHILL (MODESTO)**  
**Distribution of Cross-Year Deferrals and Revenues**

| LEA  | % FRPL | Cross-Year Deferrals | 2011-12 Revenues | ADA   | LEA Level   | LEA Type |
|--|--------|----------------------|------------------|-------|-------------|----------|
| Kingsburg Joint Union High                       | 19%    | 640                  | 7,009            | 1,103 | High School | DISTRICT |
| Lincoln Elementary                               | 0%     | -                    | 10,913           | 13    | Elementary  | CHARTER  |
| Mark Twain Union Elementary                      | 52%    | 229                  | 6,240            | 741   | Elementary  | DISTRICT |
| Monroe Elementary                                | 84%    | 1,079                | 6,344            | 183   | Elementary  | DISTRICT |
| Morris E. Dailey Charter Elementary              | 59%    | 1,391                | 5,683            | 319   | Elementary  | CHARTER  |
| Mountain Home Charter (Alternative)              | 99%    | 541                  | 5,558            | 223   | Elementary  | CHARTER  |
| Oakdale Home Study Charter                       | 19%    | 943                  | 6,539            | 70    | High School | CHARTER  |
| Oakdale Joint Unified                            | 42%    | 729                  | 6,557            | 5,008 | Unified     | DISTRICT |
| Pine Ridge Elementary                            | 26%    | -                    | 20,635           | 86    | Elementary  | DISTRICT |
| Quail Lake Environmental Charter                 | 22%    | 904                  | 5,563            | 572   | Elementary  | CHARTER  |
| Roberts Ferry Charter School Academy             | 41%    | -                    | 5,883            | 31    | Middle      | CHARTER  |
| Roberts Ferry Union Elementary                   | 53%    | 1,905                | 10,363           | 67    | Elementary  | DISTRICT |
| Sierra Charter                                   | 61%    | 855                  | 6,525            | 668   | Unified     | CHARTER  |
| Sierra Unified                                   | 23%    | -                    | 8,576            | 1,460 | Unified     | DISTRICT |
| Sonora Elementary                                | 49%    | 195                  | 6,382            | 673   | Elementary  | DISTRICT |
| Sonora Union High                                | 38%    | 8                    | 7,740            | 1,190 | High School | DISTRICT |
| Soulsbyville Elementary                          | 35%    | 441                  | 6,320            | 497   | Elementary  | DISTRICT |
| Summerville Elementary                           | 49%    | 433                  | 6,440            | 347   | Elementary  | DISTRICT |
| Summerville Union High                           | 21%    | 793                  | 10,813           | 482   | High School | DISTRICT |
| Twain Harte-Long Barn Union Elementary           | 50%    | 8                    | 10,168           | 307   | Elementary  | DISTRICT |
| Valley Home Joint Elementary                     | 99%    | 724                  | 6,361            | 163   | Elementary  | DISTRICT |
| Waterford Unified                                | 70%    | 999                  | 6,868            | 1,714 | Unified     | DISTRICT |
| Whitmore Charter High                            | 25%    | 1,113                | 6,623            | 132   | High School | CHARTER  |
| Whitmore Charter School of Art & Technology      | 52%    | 1,058                | 6,168            | 407   | Elementary  | CHARTER  |
| Whitmore Charter School of Personalized Learning | 11%    | 2,024                | 6,157            | 11    | Elementary  | CHARTER  |
| Yosemite Unified                                 | 42%    | 429                  | 7,687            | 1,831 | Unified     | DISTRICT |