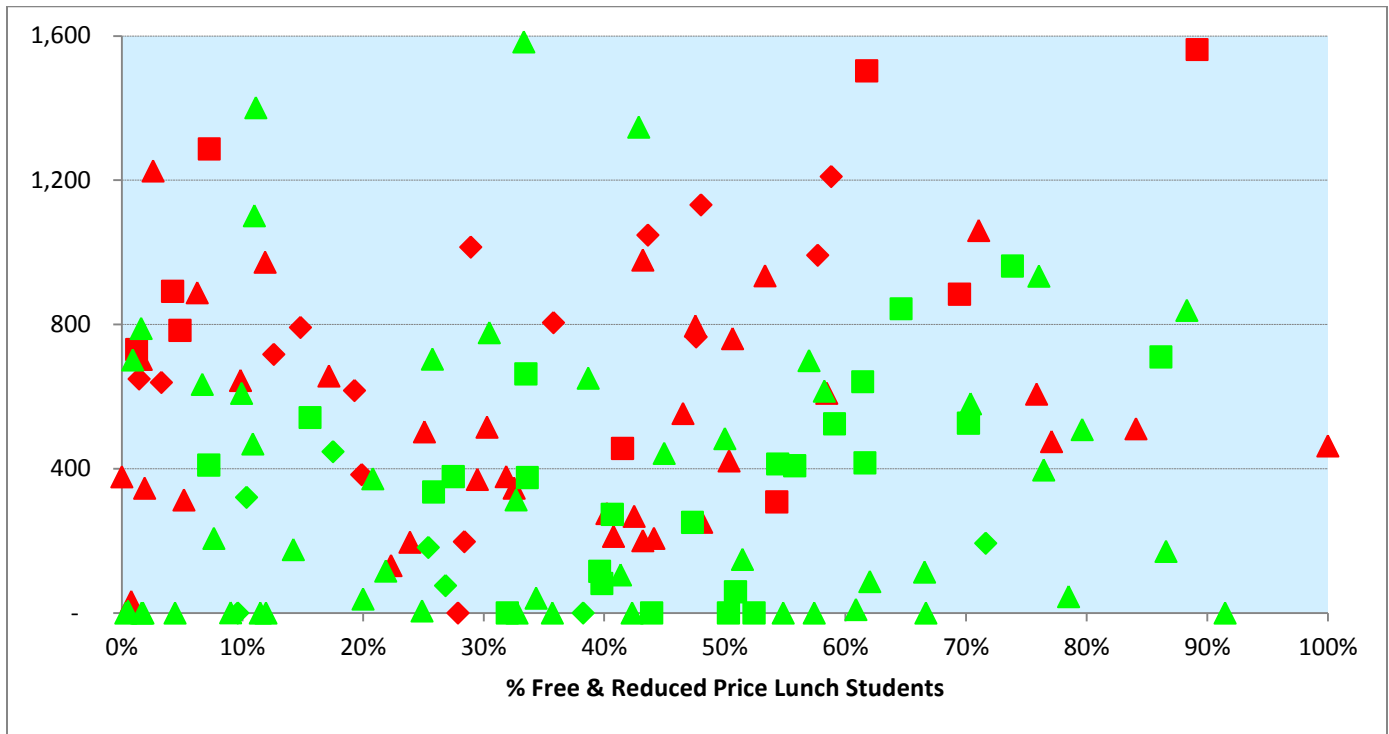
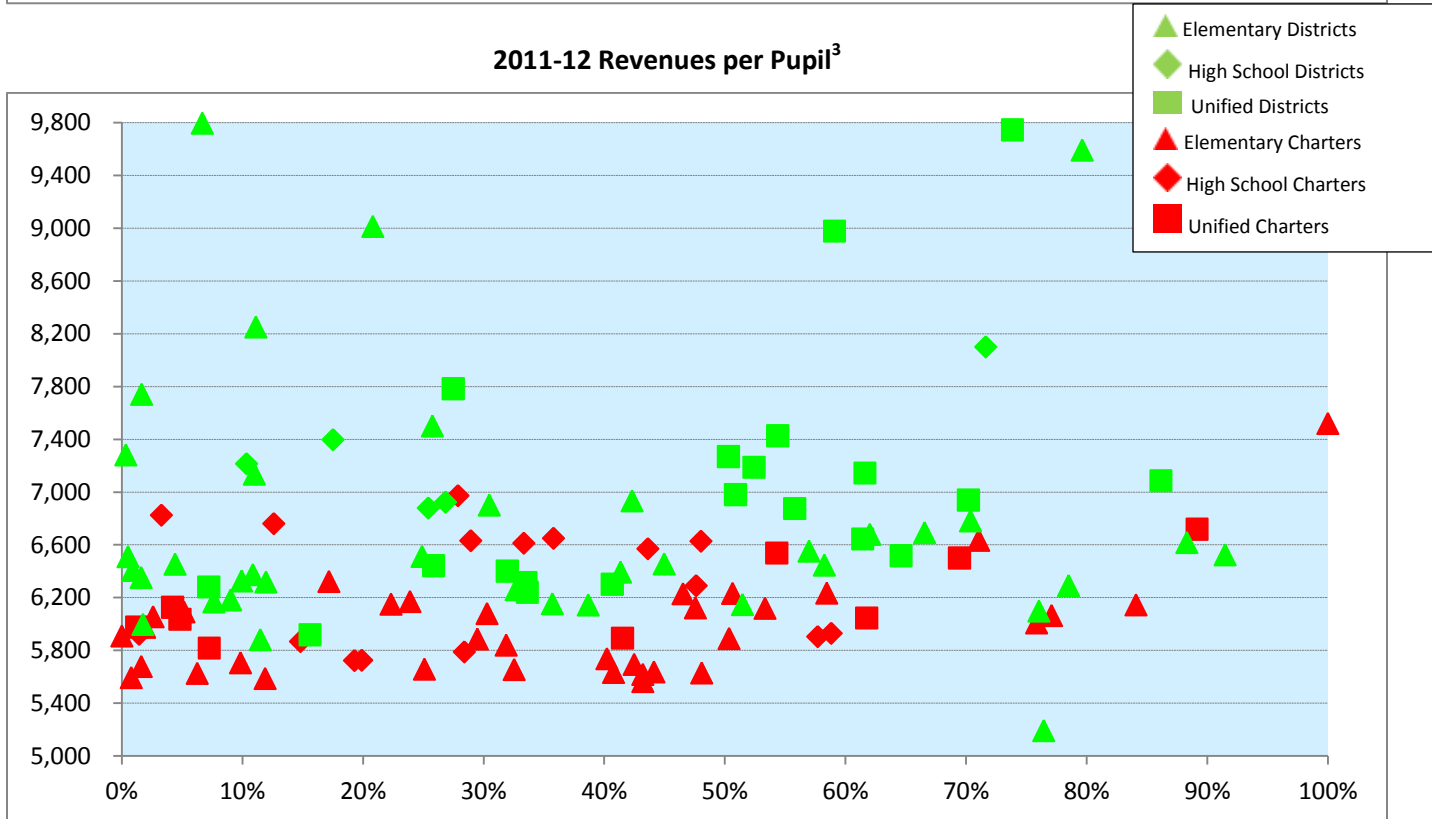


2012-13 Cross-Year Deferrals per Pupil^{1,2}



2011-12 Revenues per Pupil³



¹ Source – California Department of Finance, California Department of Education

² Both the Deferral and Revenue charts do not include outliers that exceeded the maximum deferral & revenue amount.

³ Source - California Department of Finance



SENATE DISTRICT 2 – SEN. NOREEN EVANS (SANTA ROSA)
Distribution of Cross-Year Deferrals and Revenues

LEA	% FRPL	Cross-Year Deferrals	2011-12 Revenues	ADA	LEA Level	LEA Type
Abraxis Charter	28%	-	6,973	55	High School	CHARTER
Accelerated Achievement Academy	69%	884	6,500	155	Unified	CHARTER
Alder Grove Charter	62%	1,503	6,046	252	Unified	CHARTER
Alexander Valley Union Elementary	34%	41	11,951	126	Elementary	DISTRICT
Anderson Valley Unified	59%	524	8,977	504	Unified	DISTRICT
Arcata Elementary	45%	443	6,456	499	Elementary	DISTRICT
Bellevue Union Elementary	91%	-	6,525	1,661	Elementary	DISTRICT
Benicia Unified	16%	542	5,919	4,794	Unified	DISTRICT
Bennett Valley Union Elementary	8%	207	6,168	935	Elementary	DISTRICT
Big Lagoon Union Elementary	80%	509	9,591	46	Elementary	DISTRICT
Binkley Elementary Charter	48%	252	5,630	377	Elementary	CHARTER
Bolinas-Stinson Union Elementary	33%	-	20,534	110	Elementary	DISTRICT
Cali Calmecac Language Academy	58%	609	6,235	977	Elementary	CHARTER
Calistoga Joint Unified	44%	-	12,954	806	Unified	DISTRICT
Cinnabar Charter	0%	378	5,910	144	Elementary	CHARTER
Cinnabar Elementary	76%	397	5,193	179	Elementary	DISTRICT
Cloverdale Unified	32%	-	6,401	1,392	Unified	DISTRICT
Coastal Grove Charter	53%	935	6,120	197	Elementary	CHARTER
Cuddeback Union Elementary	42%	-	6,934	128	Elementary	DISTRICT
Cutten Elementary	39%	651	6,145	537	Elementary	DISTRICT
Dixie Elementary	0%	-	7,282	1,734	Elementary	DISTRICT
Dunham Charter	6%	888	5,627	152	Elementary	CHARTER
Dunham Elementary	15%	6,753	17,104	21	Elementary	DISTRICT
Eureka City Unified	54%	413	7,426	3,618	Unified	DISTRICT
Ferndale Unified	27%	378	7,783	468	Unified	DISTRICT
Fieldbrook Elementary	30%	777	6,902	117	Elementary	DISTRICT
Fort Bragg Unified	62%	417	7,144	1,764	Unified	DISTRICT
Fort Ross Elementary	20%	39	12,011	28	Elementary	DISTRICT
Fortuna Elementary	76%	934	6,099	638	Elementary	DISTRICT
Fortuna Union High	10%	321	7,215	1,069	High School	DISTRICT
Freshwater Charter Middle	15%	792	5,868	51	Middle	CHARTER
Freshwater Elementary	10%	609	6,327	271	Elementary	DISTRICT
Fuente Nueva Charter	47%	553	6,230	95	Elementary	CHARTER
Garfield Elementary	2%	-	7,741	59	Elementary	DISTRICT
Geyserville Unified	47%	252	10,820	242	Unified	DISTRICT
Gravenstein Union Elementary	12%	-	6,319	613	Elementary	DISTRICT
Green Point Elementary	33%	1,584	24,528	7	Elementary	DISTRICT
Guerneville Elementary	62%	87	6,680	277	Elementary	DISTRICT
Harmony Union Elementary	52%	4,952	27,224	76	Elementary	DISTRICT
Healdsburg Charter	40%	276	5,738	85	Elementary	CHARTER
Healdsburg Unified	52%	-	7,188	1,896	Unified	DISTRICT
Horicon Elementary	67%	-	20,440	62	Elementary	DISTRICT
Howell Mountain Elementary	55%	-	12,177	104	Elementary	DISTRICT
Hydesville Elementary	33%	314	6,261	152	Elementary	DISTRICT

Take action at <http://www.edvoice.org/fairfunding> or for more information, contact [Sarah Lillis](#), EdVoice Institute Director.



SENATE DISTRICT 2 – SEN. NOREEN EVANS (SANTA ROSA)
Distribution of Cross-Year Deferrals and Revenues

LEA	% FRPL	Cross-Year Deferrals	2011-12 Revenues	ADA	LEA Level	LEA Type
Insight School of California - North Bay	29%	1,015	6,632	148	High School	CHARTER
Jacoby Creek Elementary	14%	176	2,942	862	Elementary	DISTRICT
Kelseyville Unified	56%	409	6,875	1,627	Unified	DISTRICT
Kentfield Elementary	1%	5	6,511	1,088	Elementary	DISTRICT
Kid Street Learning Center Charter	100%	463	7,520	45	Elementary	CHARTER
Kneeland Elementary	7%	634	9,795	32	Elementary	DISTRICT
Konocti Unified	86%	710	7,086	2,827	Unified	DISTRICT
La Vida Charter	1%	730	5,977	85	Unified	CHARTER
Laguna Joint Elementary	11%	1,401	8,251	19	Elementary	DISTRICT
Lakeport Unified	7%	410	6,281	1,460	Unified	DISTRICT
Larkspur-Corte Madera	9%	1	6,183	1,285	Elementary	DISTRICT
Laurel Tree Charter	42%	456	5,893	104	Unified	CHARTER
Manchester Union Elementary	57%	-	11,011	49	Elementary	DISTRICT
Maple Creek Elementary	43%	1,347	17,475	9	Elementary	DISTRICT
Mare Island Technology Academy	58%	992	5,905	401	Middle	CHARTER
Mark West Charter	32%	378	5,841	176	Elementary	CHARTER
Mark West Union Elementary	36%	-	6,154	1,272	Elementary	DISTRICT
Mattole Valley Charter (#159)	4%	892	6,127	710	Unified	CHARTER
McKinleyville Union Elementary	51%	149	6,148	1,078	Elementary	DISTRICT
Mendocino Unified	40%	115	13,797	481	Unified	DISTRICT
Middletown Unified	26%	335	6,443	1,553	Unified	DISTRICT
Mill Valley Elementary	4%	-	6,454	2,712	Elementary	DISTRICT
MIT Academy	48%	1,132	6,628	335	High School	CHARTER
Monte Rio Union Elementary	50%	484	11,008	84	Elementary	DISTRICT
Montgomery Elementary	22%	116	13,537	34	Elementary	DISTRICT
Napa Valley Language Academy	50%	422	5,891	684	Elementary	CHARTER
Napa Valley Unified	41%	273	6,302	14,844	Unified	DISTRICT
Northcoast Preparatory and Performing Arts Academy	13%	717	6,761	124	High School	CHARTER
Northern Humboldt Union High	18%	447	7,397	1,414	High School	DISTRICT
Northwest Prep at Piner-Olivet	3%	639	6,825	111	High School	CHARTER
Novato Charter	2%	703	5,679	242	Elementary	CHARTER
Novato Unified	34%	663	6,314	7,416	Unified	DISTRICT
Oak Grove Elementary/Willowside Middle	25%	502	5,659	774	Elementary	CHARTER
Oak Grove Union Elementary	15%	6,472	38,291	76	Elementary	DISTRICT
Orchard View	5%	784	6,036	192	Unified	CHARTER
Pacific Union Elementary	11%	1,102	7,136	335	Elementary	DISTRICT
Pacific View Charter	54%	308	6,538	515	Unified	CHARTER
Phillips Charter	77%	475	6,065	569	Elementary	CHARTER
Piner-Olivet Charter	1%	649	5,923	197	Middle	CHARTER
Piner-Olivet Union Elementary	2%	-	5,998	1,160	Elementary	DISTRICT
Pivot Online Charter - North Bay	33%	3,647	6,613	31	High School	CHARTER
Pope Valley Union Elementary	61%	10	15,877	66	Elementary	DISTRICT
Potter Valley Community Unified	74%	962	9,745	244	Unified	DISTRICT

Take action at <http://www.edvoice.org/fairfunding> or for more information, contact [Sarah Lillis](#), EdVoice Institute Director.



SENATE DISTRICT 2 – SEN. NOREEN EVANS (SANTA ROSA)
Distribution of Cross-Year Deferrals and Revenues

LEA	% FRPL	Cross-Year Deferrals	2011-12 Revenues	ADA	LEA Level	LEA Type
REACH	10%	645	5,707	60	Elementary	CHARTER
Redwood Academy of Ukiah	44%	1,048	6,571	140	High School	CHARTER
Redwood Preparatory Charter	12%	973	5,588	100	Elementary	CHARTER
Rincon Valley Charter	28%	198	5,789	163	Middle	CHARTER
Rincon Valley Union Elementary	21%	372	9,013	1,220	Elementary	DISTRICT
Rio Dell Elementary	1%	702	6,407	298	Elementary	DISTRICT
River Charter	20%	384	5,726	345	Middle	CHARTER
River Delta Joint Unified	51%	59	6,980	1,935	Unified	DISTRICT
River Oak Charter	51%	761	6,233	224	Elementary	CHARTER
Roseland Charter	89%	1,562	6,718	719	Unified	CHARTER
Roseland Elementary	88%	839	6,618	1,487	Elementary	DISTRICT
Ross Valley Elementary	11%	469	6,375	1,996	Elementary	DISTRICT
Salmon Creek School - A Charter	42%	268	5,695	147	Elementary	CHARTER
San Rafael City Elementary	58%	615	6,447	3,887	Elementary	DISTRICT
San Rafael City High	38%	-	10,275	1,982	High School	DISTRICT
Santa Rosa Accelerated Charter	1%	32	5,595	124	Elementary	CHARTER
Santa Rosa Charter	5%	314	6,093	188	Elementary	CHARTER
Santa Rosa Charter School for the Arts	33%	346	5,656	316	Elementary	CHARTER
Santa Rosa Elementary	67%	113	6,693	4,240	Elementary	DISTRICT
Santa Rosa High	27%	76	6,924	10,487	High School	DISTRICT
Sausalito Elementary	87%	171	27,873	156	Elementary	DISTRICT
Sebastopol Independent Charter	29%	370	5,887	263	Elementary	CHARTER
Sebastopol Union Elementary	41%	106	6,394	663	Elementary	DISTRICT
Shearer Charter	84%	511	6,146	500	Elementary	CHARTER
Six Rivers Charter High	36%	805	6,650	88	High School	CHARTER
Sonoma Charter	22%	132	6,151	223	Elementary	CHARTER
Sonoma Valley Unified	50%	-	7,269	4,018	Unified	DISTRICT
South Bay Charter	59%	1,210	5,930	65	Middle	CHARTER
South Bay Union Elementary	79%	45	6,292	6,550	Elementary	DISTRICT
Spring Creek Matanzas Charter	41%	213	5,634	553	Elementary	CHARTER
St. Helena Unified	40%	82	16,427	1,309	Unified	DISTRICT
Stone Bridge	2%	346	5,976	254	Elementary	CHARTER
Sunridge Charter	3%	1,226	6,056	185	Elementary	CHARTER
Tamalpais Union High	10%	-	12,247	3,651	High School	DISTRICT
Three Rivers Charter	7%	1,287	5,818	67	Unified	CHARTER
Tree of Life Charter	48%	796	6,123	81	Elementary	CHARTER
Trillium Charter	71%	1,061	6,635	35	Elementary	CHARTER
Twin Hills Charter Middle	19%	617	5,724	299	Middle	CHARTER
Twin Hills Union Elementary	26%	704	7,501	380	Elementary	DISTRICT
Two Rock Union	2%	789	6,353	172	Elementary	DISTRICT
Ukiah Unified	61%	641	6,645	5,245	Unified	DISTRICT
Union Joint Elementary	38%	2,458	15,824	9	Elementary	DISTRICT
Union Street Charter	17%	657	6,323	95	Elementary	CHARTER



SENATE DISTRICT 2 – SEN. NOREEN EVANS (SANTA ROSA)
Distribution of Cross-Year Deferrals and Revenues

LEA	% FRPL	Cross-Year Deferrals	2011-12 Revenues	ADA	LEA Level	LEA Type
Upper Lake Union Elementary	57%	700	6,553	471	Elementary	DISTRICT
Upper Lake Union High	72%	193	8,100	319	High School	DISTRICT
Vallejo Charter	43%	979	5,565	473	Elementary	CHARTER
Vallejo City Unified	65%	844	6,517	13,321	Unified	DISTRICT
Village Charter	30%	515	6,080	106	Elementary	CHARTER
Village Elementary Charter	44%	207	5,638	396	Elementary	CHARTER
West Side Union Elementary	11%	-	5,882	165	Elementary	DISTRICT
West Sonoma County Union High	25%	182	6,879	2,125	High School	DISTRICT
Whited Elementary Charter	43%	201	5,619	437	Elementary	CHARTER
Willits Charter	48%	766	6,291	138	High School	CHARTER
Willits Unified	70%	527	6,940	1,523	Unified	DISTRICT
Willow Creek Academy	24%	196	6,171	236	Elementary	CHARTER
Wilmar Union Elementary	25%	6	6,513	209	Elementary	DISTRICT
Windsor Unified	34%	376	6,241	4,151	Unified	DISTRICT
Wright Charter	76%	607	6,009	517	Elementary	CHARTER
Wright Elementary	70%	580	6,782	1,045	Elementary	DISTRICT